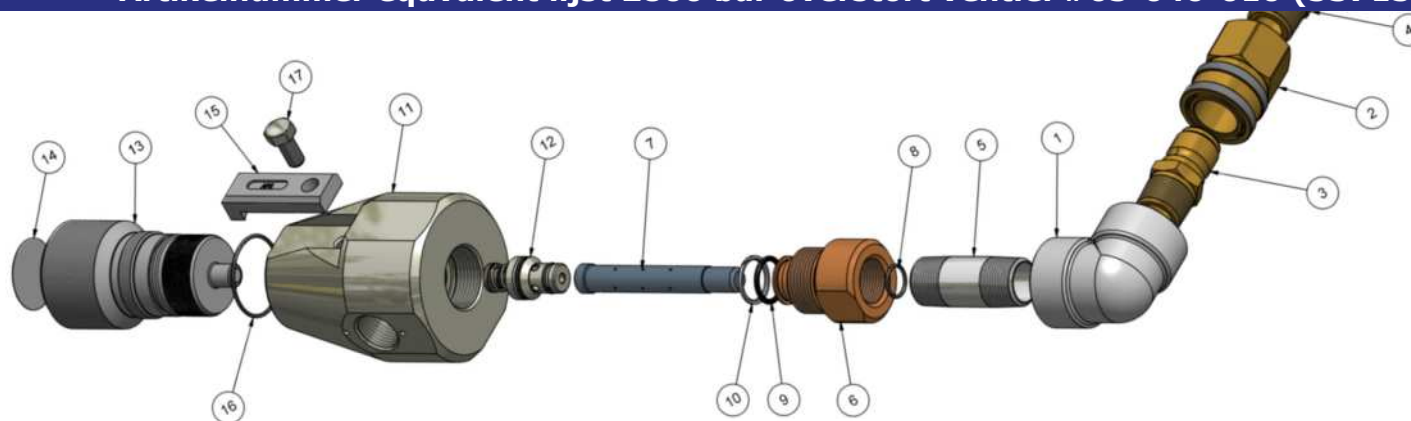




**Part number Equivalent list 2800 bar (40) PRV J/S type #65-040-010 (53715)**  
**Teile Nummer Äquivalent Tabelle Überlaufventile 2800 bar J/S type #65-040-010 (53715)**  
**Artikelnummer equivalent lijst 2800 bar overstort ventiel #65-040-010 (53715)**



Item	Part No. Teile nr. Art. nr.	Jetstr. Part No. Jetstr. Teile nr. Jetstr. art. nr.	Waterbl.Techn. Part No. Waterbl. Techn Teile nr. Waterbl. Techn art. nr.	Item	Part No. Teile nr. Art. nr.	Jetstr. Part No. Jetstr. Teile nr. Jetstr. art. nr.	Waterbl.Techn. Part No. Waterbl. Techn Teile nr. Waterbl. Techn art. nr.
1	65-040-006		K27646	10	30-017-117		K53725
2	65-040-007			11	65-040-009		K53714
3	65-040-008			12	65-040-001	53725	K53726
4	65-040-005		K25797	13	65-110-003		K52145
5	65-040-004		K27645	14	70-010-019		
6	65-040-003		K53720	15	70-110-008		K50796
7	65-040-002		K53727	16	30-001-029		
8	30-001-015		K26453	17	10-016-075		K25594
9	30-001-117		K27642				

**Salomon Jetting Parts B.V.**  
**Hoeksedijk 109, 3299 AE Maasdam, The Netherlands**  
**Tel: +31(0)88 126 1900 Fax: +31(0)88 126 1999**  
**e-mail: [info@salomonjettingparts.com](mailto:info@salomonjettingparts.com)**  
**web: [www.salomonjettingparts.com](http://www.salomonjettingparts.com)**